



BERRY & DONALDSON
(Pty) Limited
GLOBAL FREIGHT LOGISTICS
Established 1963

NEWS

11 May 2015

New CT scanner to speed up customs-stopped boxes

The launch of a new scanner at the Port of Cape Town will dramatically affect the way containers are searched by customs and is likely to speed up the release of customs-stopped boxes.

This was evident from information sessions organised by the Exporters Club Western Cape (ECWC) last week.

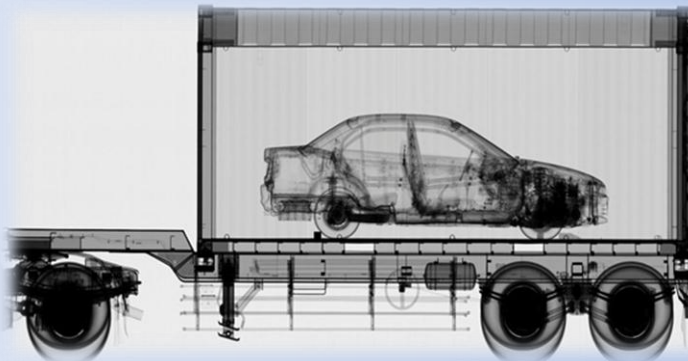
The scanner is the second of its kind in the country with the first already operational at the Port of Durban.

Cape Town, however, will operate slightly differently from Durban because the scanner is situated in the terminal as opposed to Durban where it is outside.

The scanners form part of Sars' countrywide risk management approach which has seen the organisation introducing less intrusive inspection capabilities at its ports and border entry points.

Customs officials say this approach is about focusing on risk-targeted cargo rather than just cargo in general. By sourcing sufficient intelligence they can now target only high-risk cargo, speeding up the release of containers while also improving efficiency.

With its high detection capability it also offers a low-cost intervention when cargo does have to be searched physically.



FTW www.ftwonline.co.za